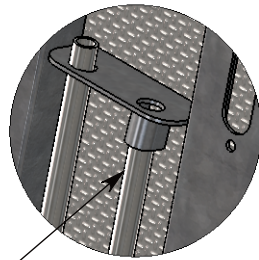
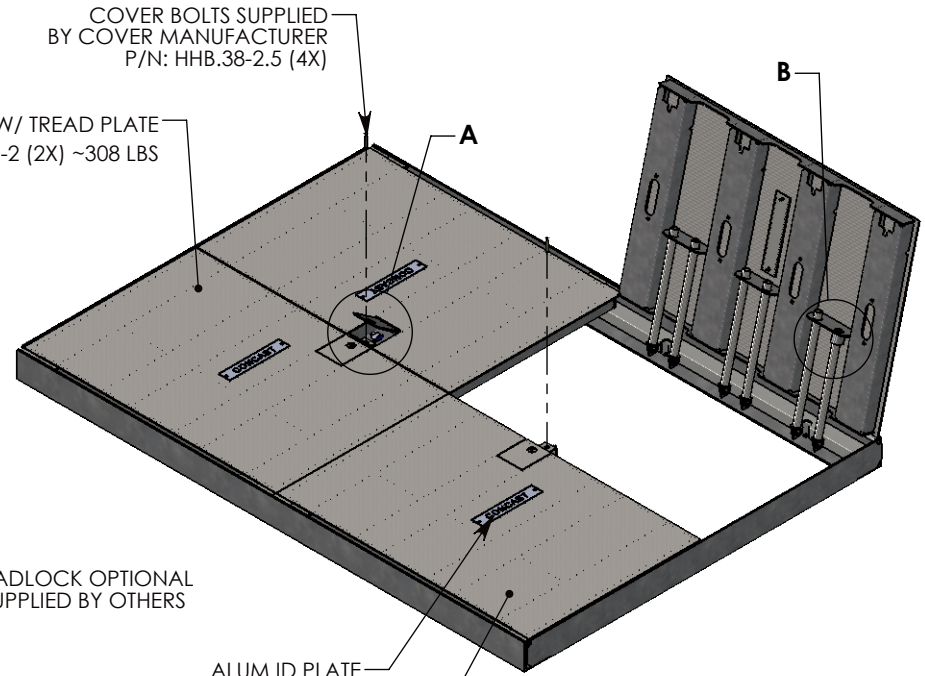
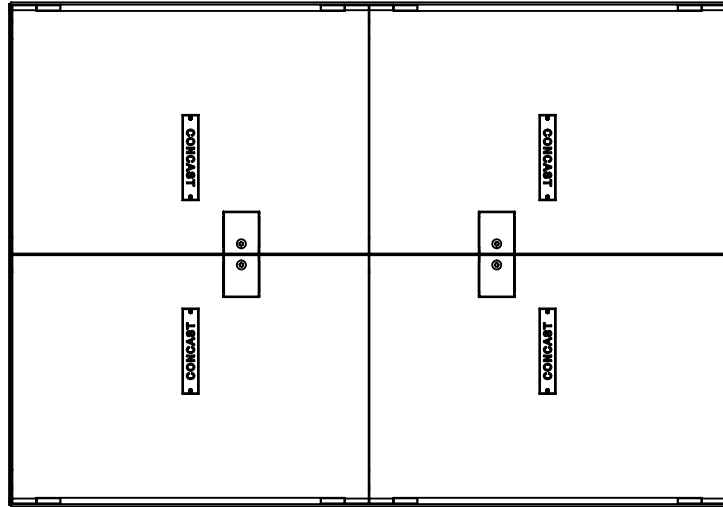
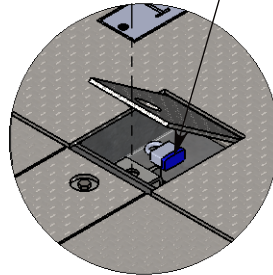


REV. B - JCG - 7/2/2020 - CHANGED DIRECTION OF COVER HINGE, ADDED FEATURE TO HOLD COVER OPEN,  
 UPDATED ACCESS COVER TO BE HINGED



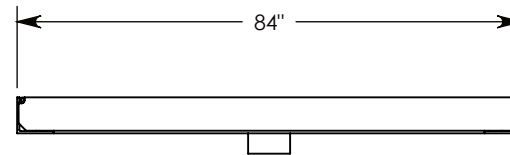
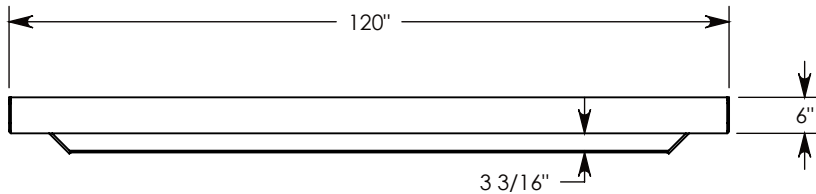
SHORT PUSHROD  
 ACTS AS KICK STAND  
 TO HOLD COVER OPEN

**DETAIL B**  
 SCALE 1 : 10



PADLOCK OPTIONAL  
 SUPPLIED BY OTHERS

**DETAIL A**  
 SCALE 1 : 10



**NOTE 1:** FOR ADDED SECURITY, PENTA HEAD (P/N: PTA.38-1.5) OR SURELOCK BOLTS (P/N: SL.38-1.25) CAN BE ADDED

AASHTO H-20 RATED – 32,000 LB. SINGLE AXLE LOAD

DRAWN BY: <b>JESSE GUTTING</b>	
CREATED DATE: <b>7/2/2020</b>	REVISION LEVEL: <b>B</b>
SAVED DATE: <b>7/2/2020</b>	SAVED BY: <b>jgutting</b>
WEIGHT: <b>2191 LBS.</b>	MATERIAL: <b>GALV. STEEL</b>

1010 NORTH STAR DRIVE  
 P.O. BOX 69  
 ZUMBROTA, MN 55992-0069

DESCRIPTION: <b>SG SPRING ASSISTED COVER &amp; FRAME</b>		SHEET 1 OF 1
DIMENSIONS ARE IN INCHES TOLERANCES: FRACTIONAL: ± 1/8" ANGULAR: ± 2°	CONTACT INFORMATION: EMAIL: <a href="mailto:INFO@CONCASTINC.COM">INFO@CONCASTINC.COM</a> PHONE: (507) 732-4095 FAX: (507) 732-4094	
PART NUMBER: <b>84-120-SPA</b>		