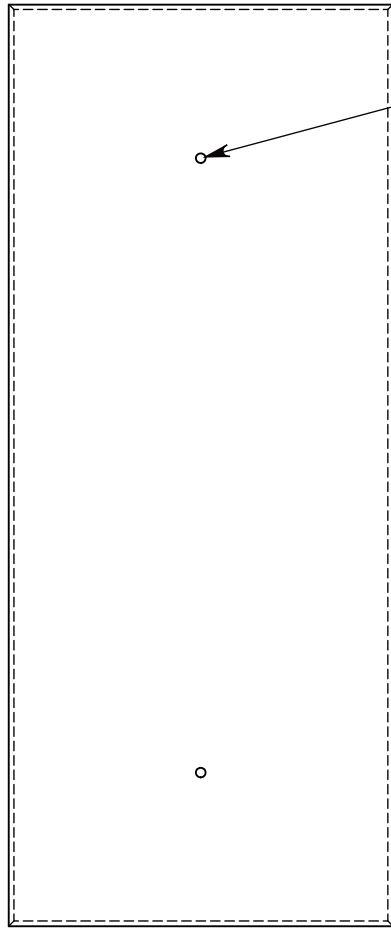
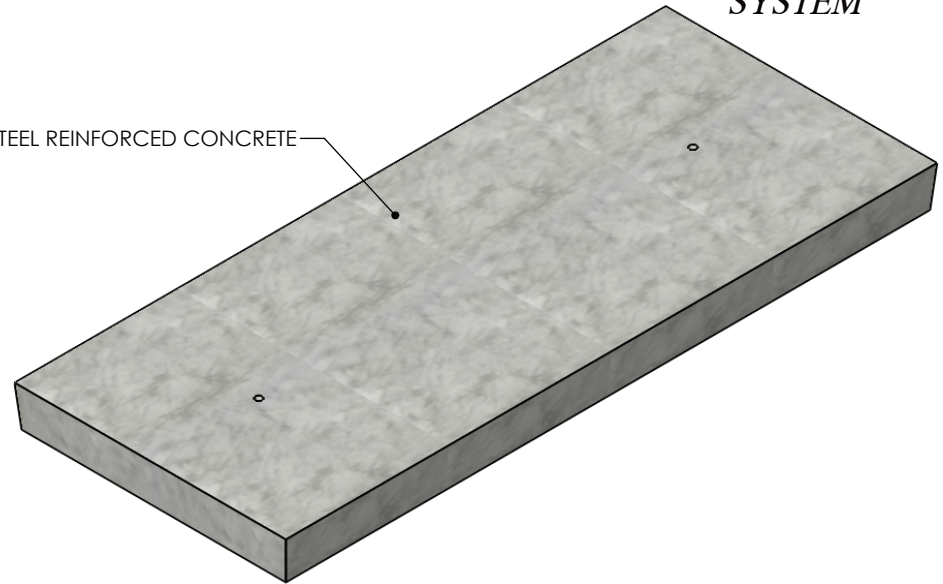
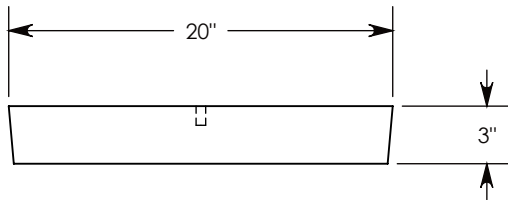


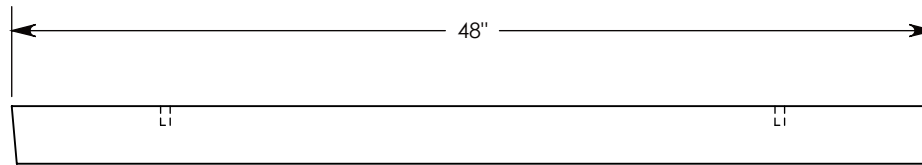
FIBERCRETE[®]
TRENCH
SYSTEM



Ø 1/2"-13 UNC INSERTS
 FOR LIFTING (2X)



STEEL REINFORCED CONCRETE



H10 RATED - 16,000 LB. PER AXLE LOAD. WHEN 20" WIDTH SPANS A TRENCH CHANNEL
 PEDESTRIAN RATED - 200 LB. PER SQ. FOOT WHEN 48" LENGTH SPANS A TRENCH CHANNEL

DRAWN BY: ROBIN FLINT

DATE: 12/4/2013

REVISION LEVEL: 0

WEIGHT:

231 LBS.

MATERIAL:

CONCRETE



CONCAST
 1010 NORTH STAR DRIVE
 P.O. BOX 69
 ZUMBROTA, MN 55992-0069

DESCRIPTION:

CONCRETE COVER

DIMENSIONS ARE IN INCHES
 TOLERANCES:
 FRACTIONAL: ± 1/8"
 ANGULAR: ± 2°

CONTACT INFORMATION:
 EMAIL: INFO@CONCASTINC.COM
 PHONE: (507) 732-4095
 FAX: (507) 732-4094

SHEET 1 OF 1

PART NUMBER:

C2048-3