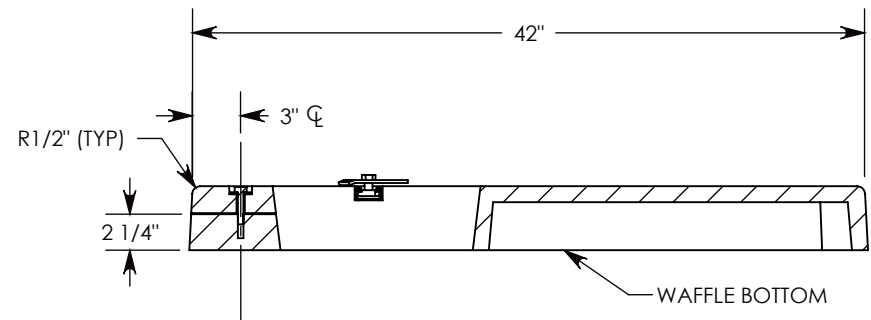
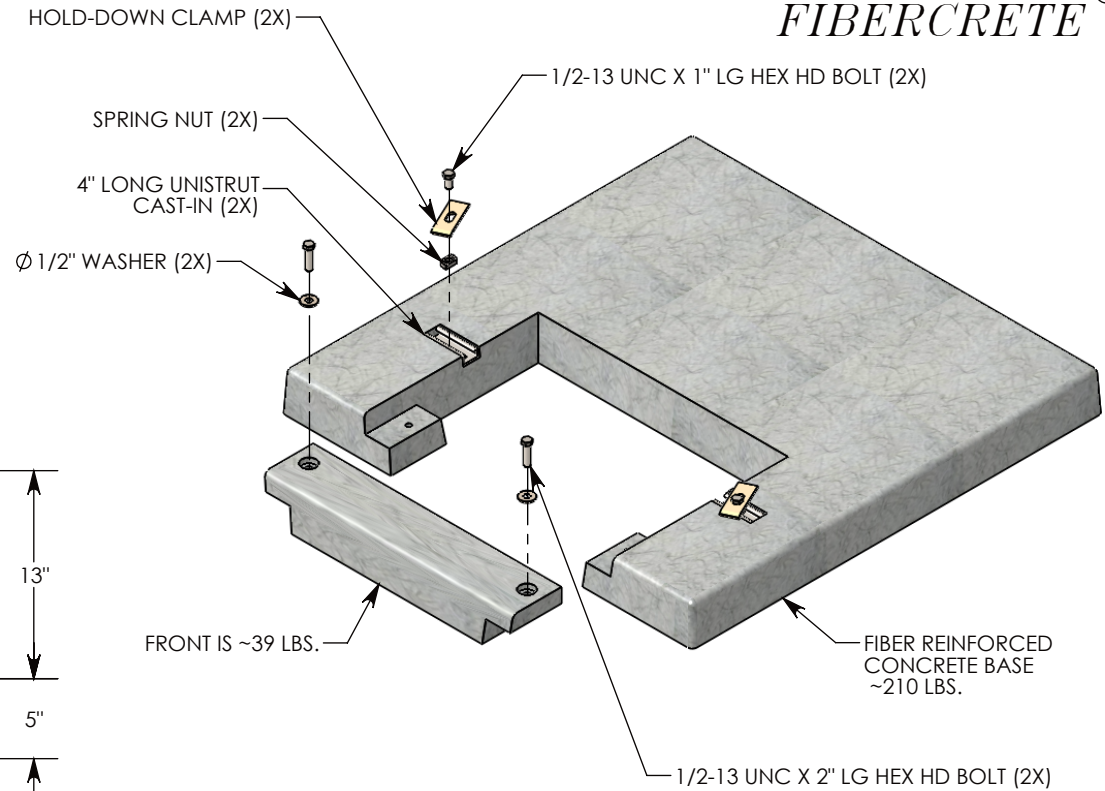
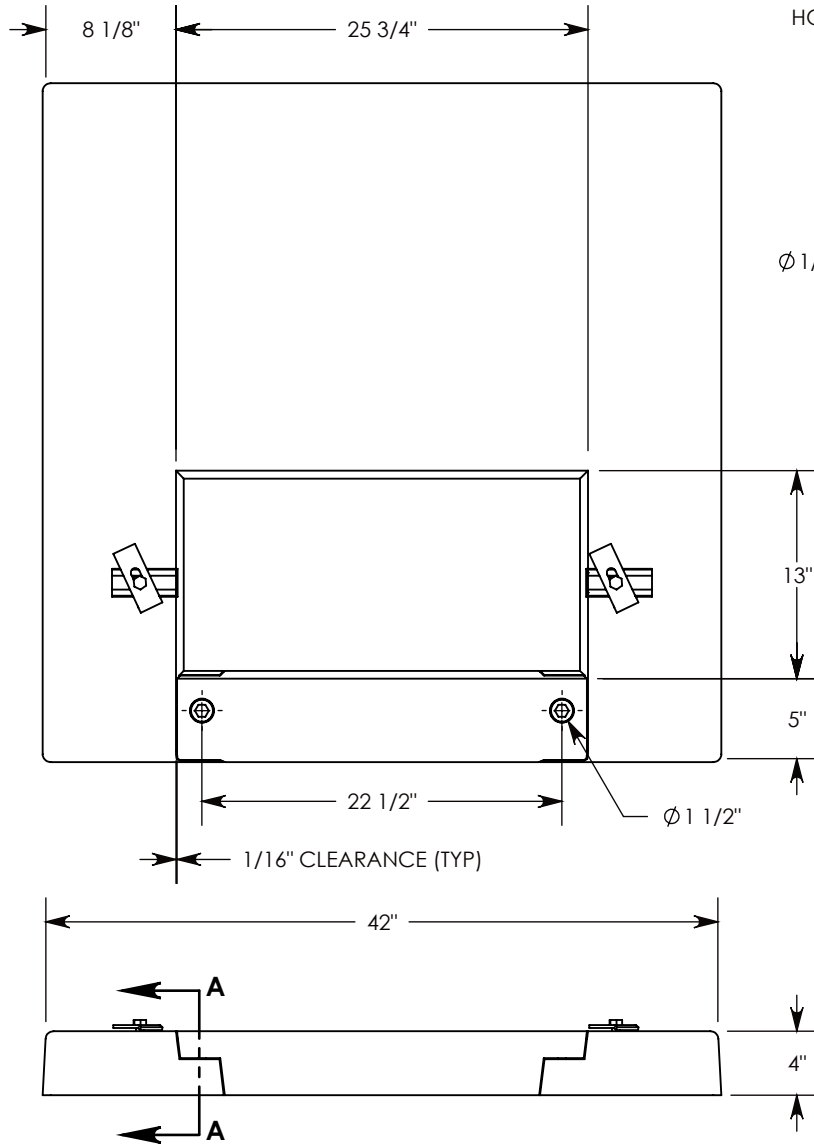


**FIBERCRETE<sup>®</sup>**



6,000 PSI CONCRETE  
 ALL VERTICAL SURFACES HAVE A 5 TO 7 DEGREE DRAFT.  
 IF SPECIFIC INSERTS OR MOUNTING HARDWARE ARE REQUIRED, PLEASE SPECIFY WHEN ORDERING.

<b>DRAWN BY: ROBIN FLINT</b>	
<b>DATE: 7/7/2014</b>	<b>REVISION LEVEL: 0</b>
<b>WEIGHT:</b>  251 LBS.	<b>MATERIAL:</b>  CAST FIBERCRETE

**CONCAST**  
 1010 NORTH STAR DRIVE  
 P.O. BOX 69  
 ZUMBROTA, MN 55992-0069

<b>DESCRIPTION:</b> <b>FIBERCRETE FLAT PAD - SPLIT</b>		
DIMENSIONS ARE IN INCHES TOLERANCES: FRACTIONAL: ± 1/8" ANGULAR: ± 2°	CONTACT INFORMATION: EMAIL: INFO@CONCASTINC.COM PHONE: (507) 732-4095 FAX: (507) 732-4094	SHEET 1 OF 1
<b>PART NUMBER:</b> <b>FP-42-42-4-1326 (5)-SPL</b>		