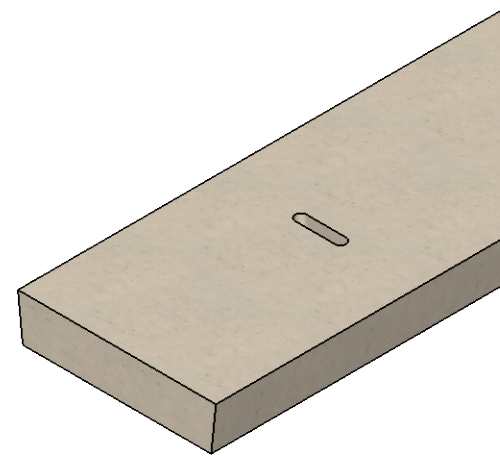
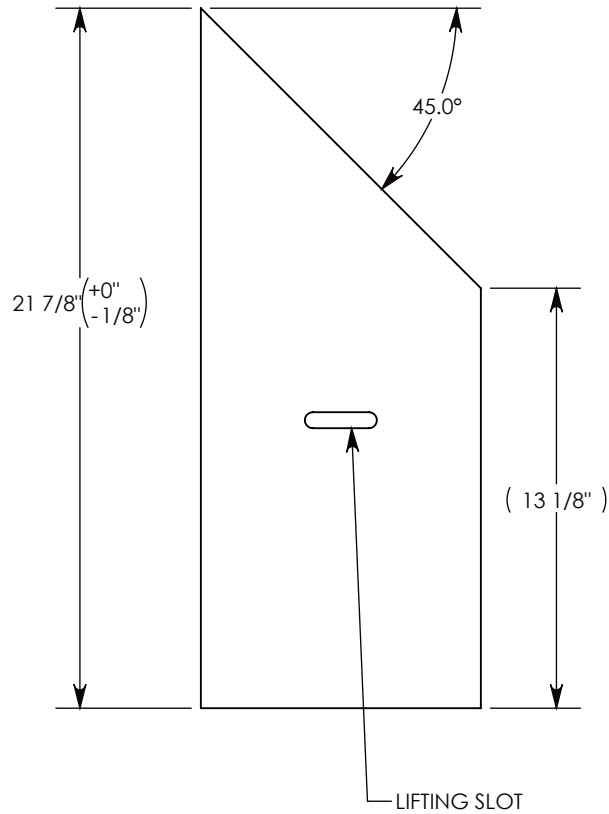
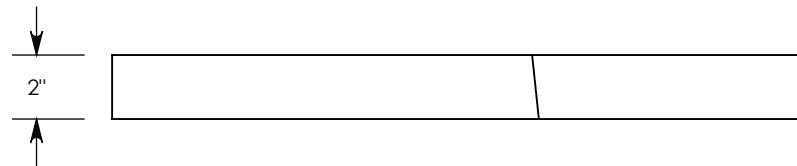
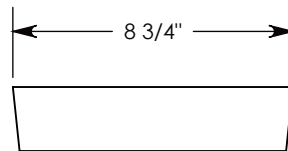


REV A - RAL - 2/9/2018 - ADDED RECESS AND THRU HOLES, CHANGED LENGTH TO 24"
 REV. B - JCG - 8/23/2021 - REMOVED INSERT, ADDED LIFTING SLOT



COVER ASSEMBLES ONTO 6" INSIDE WIDTH
 HEAVY TRAFFIC RATED CONCAST HT3 CHANNEL



AASHTO H-20 RATED – 32,000 LB. SINGLE AXLE LOAD

DRAWN BY: **JESSE GUTTING**

CREATED DATE: **8/22/2002** REVISION LEVEL: **B**

SAVED DATE: **8/23/2021** SAVED BY: **jgutting**

WEIGHT: **21 LBS.** MATERIAL: **POLYMER**

CONCAST
 1010 NORTH STAR DRIVE
 P.O. BOX 69
 ZUMBROTA, MN 55992-0069

DESCRIPTION:
HEAVY TRAFFIC COVER

DIMENSIONS ARE IN INCHES
 TOLERANCES:
 FRACTIONAL: ± 1/8"
 ANGULAR: ± 2°

CONTACT INFORMATION:
 EMAIL: INFO@CONCASTINC.COM
 PHONE: (507) 732-4095
 FAX: (507) 732-4094

SHEET 1 OF 1

PART NUMBER:
HTCP06 45R