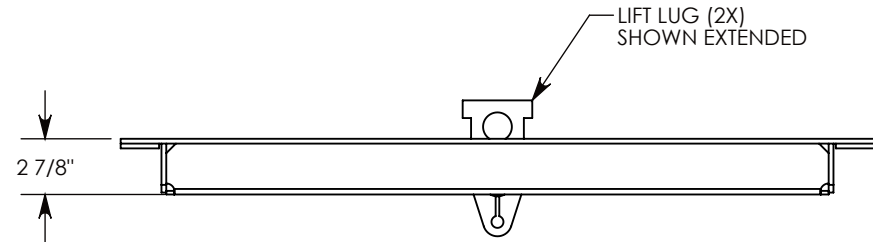
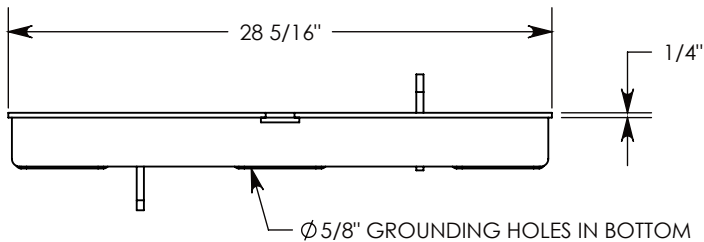
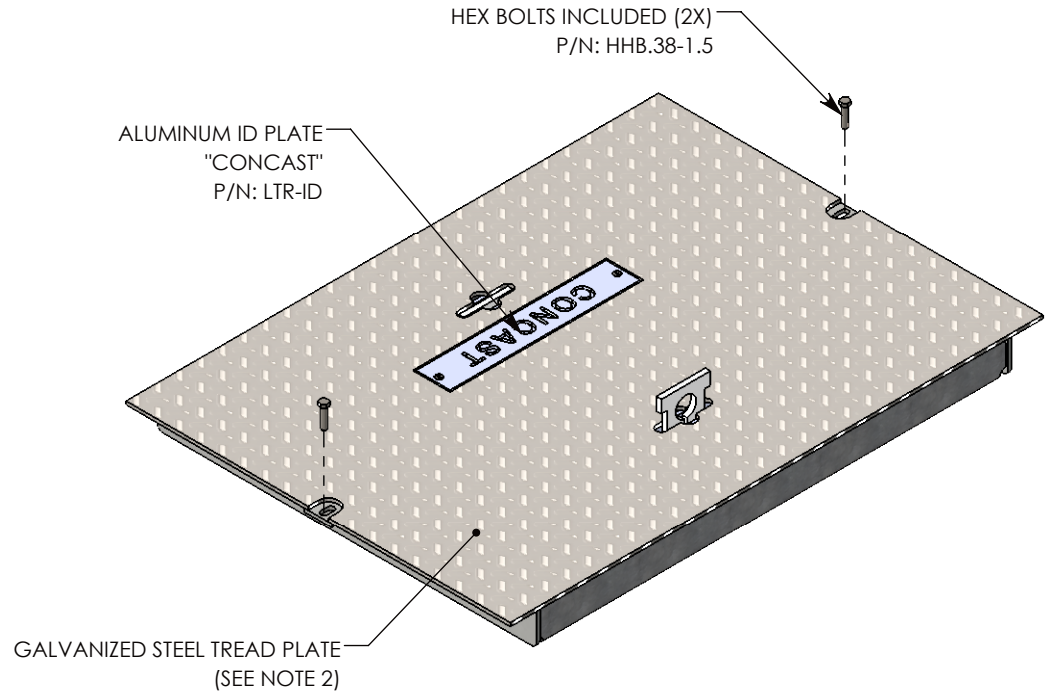
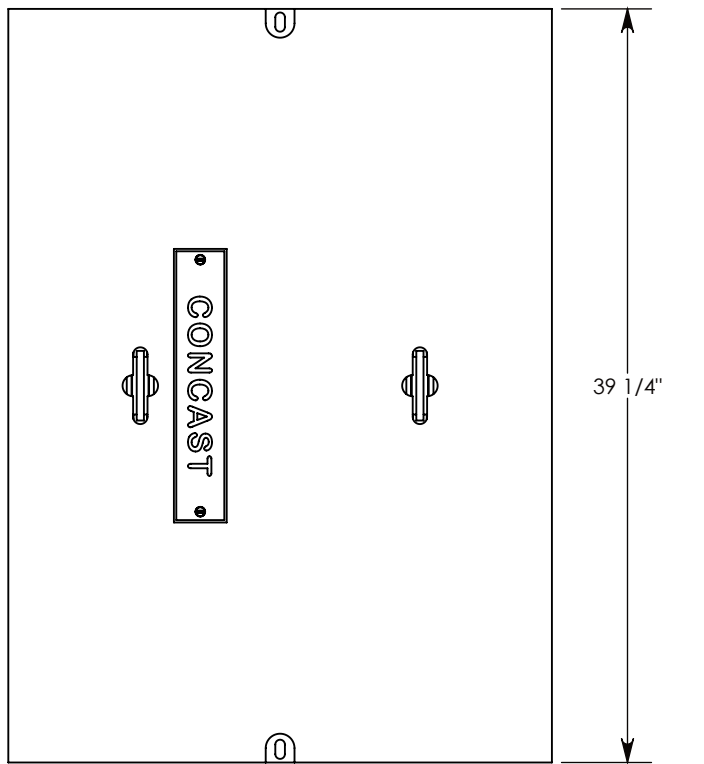


COVER ASSEMBLES ONTO
A 40" X 86" CONCAST PULL BOX



NOTE 1: FOR ADDED SECURITY, PENTA HEAD (P/N: PTA.38-1.5) OR SURELOCK BOLTS (P/N: SL.38-1.25) CAN BE ADDED
NOTE 2: TREAD ON DIAMOND PLATE ADDS 1/8" TO OVERALL HEIGHT

AASHTO H-20 RATED – 32,000 LB. SINGLE AXLE LOAD

| | |
|--------------------------------|-------------------------------------|
| DRAWN BY: JESSE GUTTING | |
| CREATED DATE: 10/8/2008 | REVISION LEVEL: A |
| SAVED DATE: 11/13/2019 | SAVED BY: JGUTTING |
| WEIGHT: 148 LBS. | MATERIAL: WELDED GALV. STEEL |

1010 NORTH STAR DRIVE
P.O. BOX 69
ZUMBROTA, MN 55992-0069

DESCRIPTION:
GALVANIZED STEEL PULL BOX COVER

DIMENSIONS ARE IN INCHES
 TOLERANCES:
 FRACTIONAL: ± 1/8"
 ANGULAR: ± 2°

CONTACT INFORMATION:
 EMAIL: INFO@CONCASTINC.COM
 PHONE: (507) 732-4095
 FAX: (507) 732-4094

SHEET 1 OF 2

PART NUMBER:
40-29-RSG