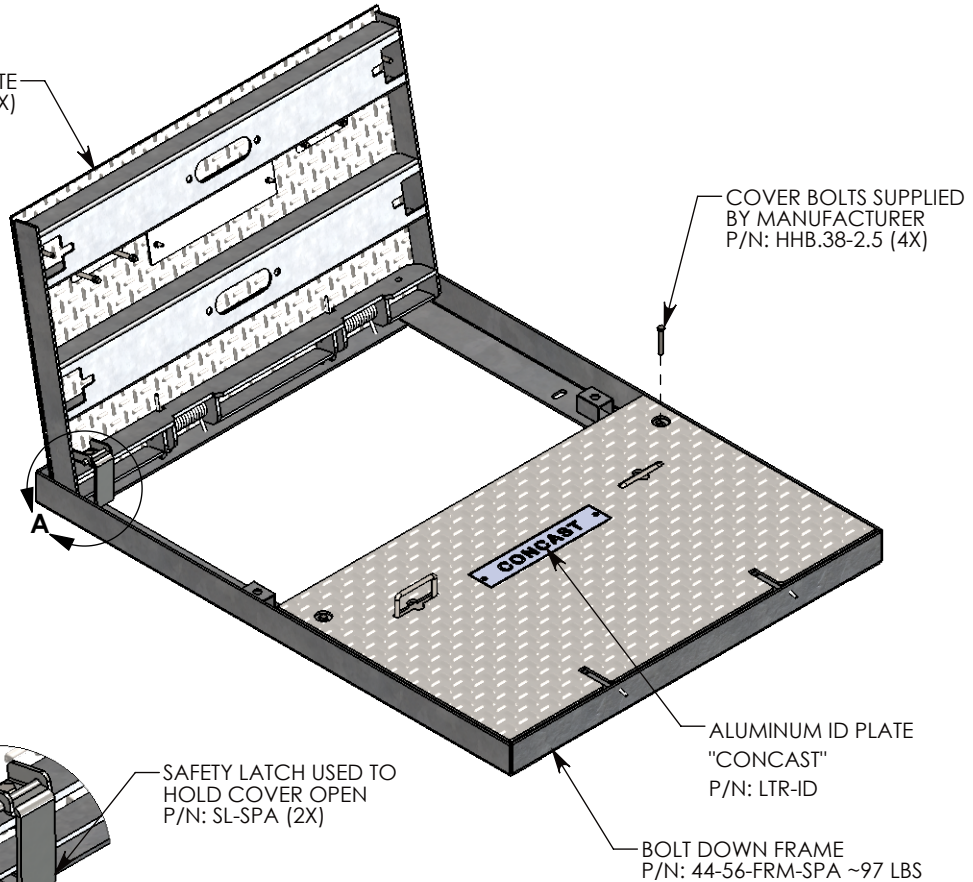


BOLT SLOT (4X)

HINGED COVER W/ TREAD PLATE
P/N: 44-28-SPA ~164 LBS (2X)

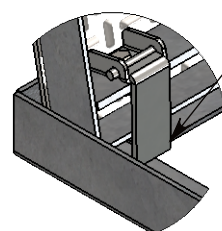


COVER BOLTS SUPPLIED BY MANUFACTURER
P/N: HHB.38-2.5 (4X)

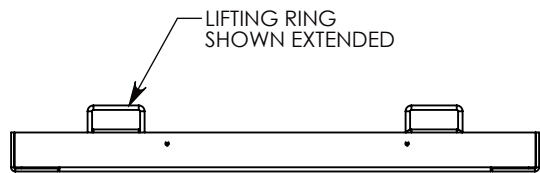
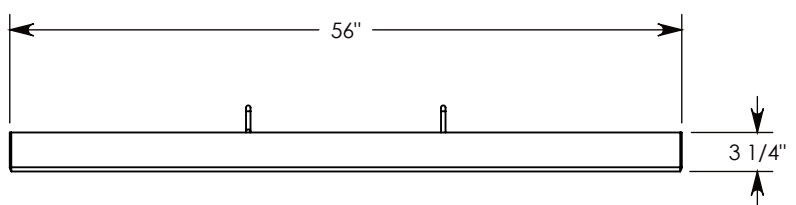
ALUMINUM ID PLATE "CONCAST"
P/N: LTR-ID

BOLT DOWN FRAME
P/N: 44-56-FRM-SPA ~97 LBS

SAFETY LATCH USED TO HOLD COVER OPEN
P/N: SL-SPA (2X)



DETAIL A
SCALE 1 : 8



AASHTO H-20 RATED - 32,000 LB. SINGLE AXLE LOAD

NOTE 1: FOR ADDED SECURITY, PENTA HEAD (P/N: PTA.38-2.5) OR SURELOCK BOLTS (P/N: SL.38-2.5) CAN BE ADDED

DRAWN BY: JESSE GUTTING	
CREATED DATE: 1/10/2019	REVISION LEVEL: A
SAVED DATE: 6/8/2020	SAVED BY: jgutting
WEIGHT: 428 LBS.	MATERIAL: WELDED GALV. STEEL

CONCAST
1010 NORTH STAR DRIVE
P.O. BOX 69
ZUMBROTA, MN 55992-0069

DESCRIPTION: SG SPRING-ASSISTED COVER W/BOLT-DOWN	
DIMENSIONS ARE IN INCHES TOLERANCES: FRACTIONAL: ± 1/8" ANGULAR: ± 2°	CONTACT INFORMATION: EMAIL: INFO@CONCASTINC.COM PHONE: (507) 732-4095 FAX: (507) 732-4094
PART NUMBER: 44-56-SPA	