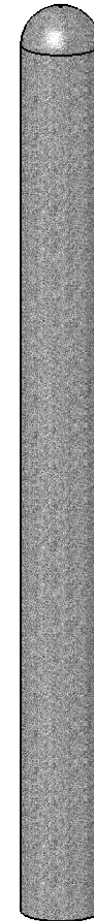
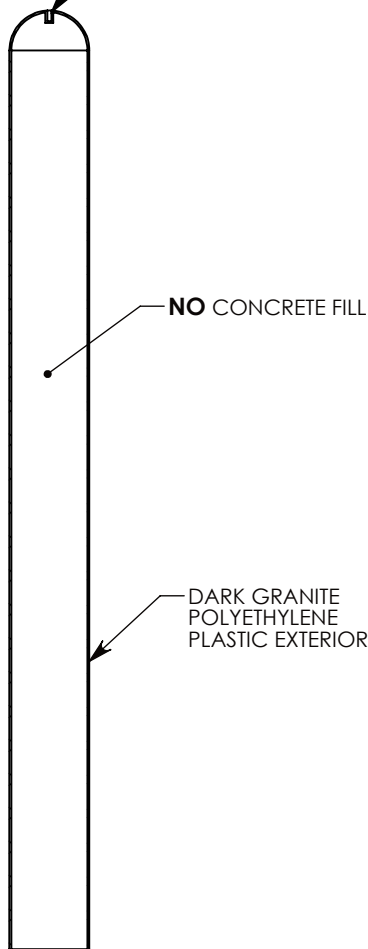


$\phi 3/8$ " THREADED HOLE FOR SECURING SAFETY CHAIN.



**DRAWN BY: ROBIN FLINT**

**DATE: 7/19/2012**

**REVISION LEVEL: 0**

**WEIGHT:**

**13 LBS.**

**MATERIAL:**

**DK GRANITE POLYETHYLENE**

**CONCAST**  
 1010 NORTH STAR DRIVE  
 P.O. BOX 69  
 ZUMBROTA, MN 55992-0069

**DESCRIPTION:**

**GUIDE POST - HOLLOW - DK. GRANITE**

DIMENSIONS ARE IN INCHES  
 TOLERANCES:  
 FRACTIONAL:  $\pm 1/8$ "  
 ANGULAR:  $\pm 2^\circ$

CONTACT INFORMATION:  
 EMAIL: INFO@CONCASTINC.COM  
 PHONE: (507) 732-4095  
 FAX: (507) 732-4094

SHEET 1 OF 1

**PART NUMBER:**

**8005DG-7H**