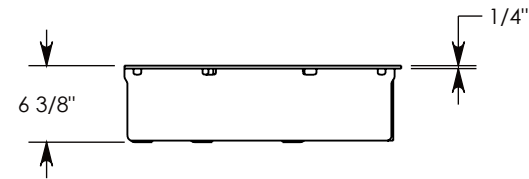
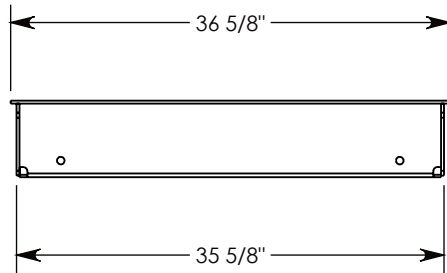
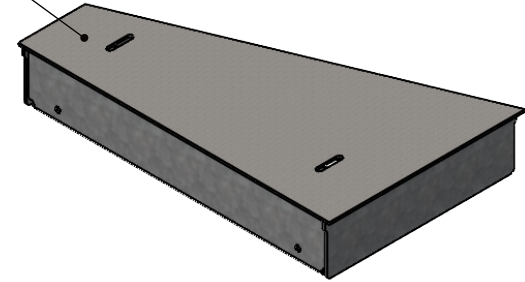


GALVANIZED STEEL TREAD PLATE



NOTE 1: TREAD ON DIAMOND PLATE ADDS 1/8" TO THE OVERALL HEIGHT

AASHTO H-40 RATED - 64,000 LB. SINGLE AXLE LOAD

|                                |                                   |
|--------------------------------|-----------------------------------|
| <b>DRAWN BY: TOM JANSEN</b>    |                                   |
| <b>CREATED DATE: 3/28/2023</b> | <b>REVISION LEVEL: 0</b>          |
| <b>SAVED DATE: 3/29/2023</b>   | <b>SAVED BY: tjansen</b>          |
| <b>WEIGHT: 124 LBS.</b>        | <b>MATERIAL: GALVANIZED STEEL</b> |



1010 NORTH STAR DRIVE  
P.O. BOX 69  
ZUMBROTA, MN 55992-0069

|  |                            |              |
|--|----------------------------|--------------|
| <b>DESCRIPTION:</b>                    |                            | SHEET 1 OF 1 |
| <b>HEAVY TRAFFIC GALV. STEEL COVER</b> |                            |              |
| DIMENSIONS ARE IN INCHES               | CONTACT INFORMATION:       |              |
| TOLERANCES:                            | EMAIL: INFO@CONCASTINC.COM |              |
| FRACTIONAL: ± 1/8"                     | PHONE: (507) 732-4095      |              |
| ANGULAR: ± 2°                          | FAX: (507) 732-4094        |              |
| <b>PART NUMBER:</b>                    |                            |              |
| <b>8031HTSG40 22.5L</b>                |                            |              |