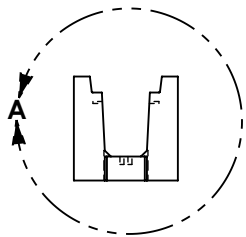
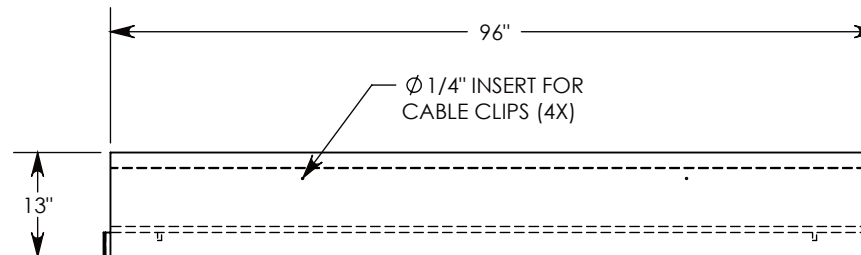


DETAIL A
SCALE 1 : 8



NOTE 1: FOR NON-STANDARD LENGTHS THE CHANNEL WILL BE SOLID BOTTOM AND DESIGNATED WITH ITS CORRESPONDING LENGTH MEASUREMENT. IE: HTF0608 32"

MAX AASHTO H-40 RATED - 64,000 LB. SINGLE AXLE LOAD.
DEPENDENT ON TRENCH COVER RATING

DRAWN BY: ROBIN FLINT

DATE: 8/14/2019

REVISION LEVEL: B

WEIGHT:

844 LBS.

MATERIAL:

CONCRETE



DESCRIPTION:

HEAVY TRAFFIC CHANNEL - SOLID BOTTOM

DIMENSIONS ARE IN INCHES
TOLERANCES:
FRACTIONAL: ± 1/8"
ANGULAR: ± 2°

CONTACT INFORMATION:
EMAIL: INFO@CONCASTINC.COM
PHONE: (507) 732-4095
FAX: (507) 732-4094

SHEET 1 OF 1

PART NUMBER:

HTF0608SB