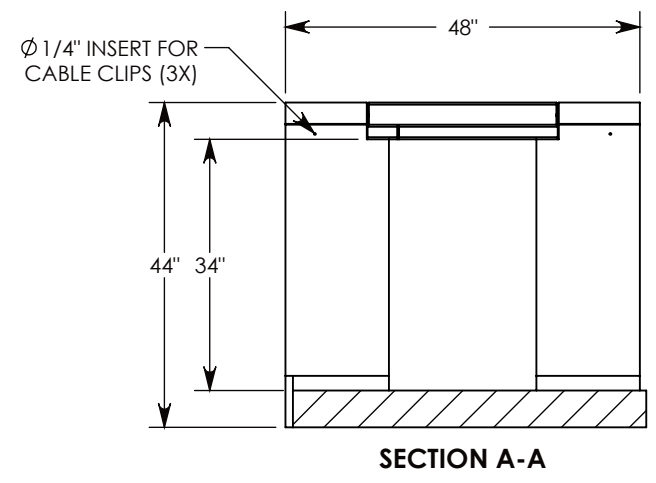
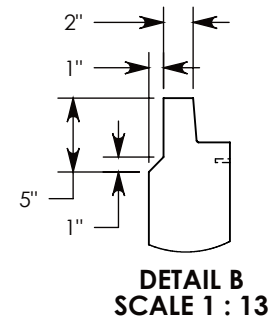
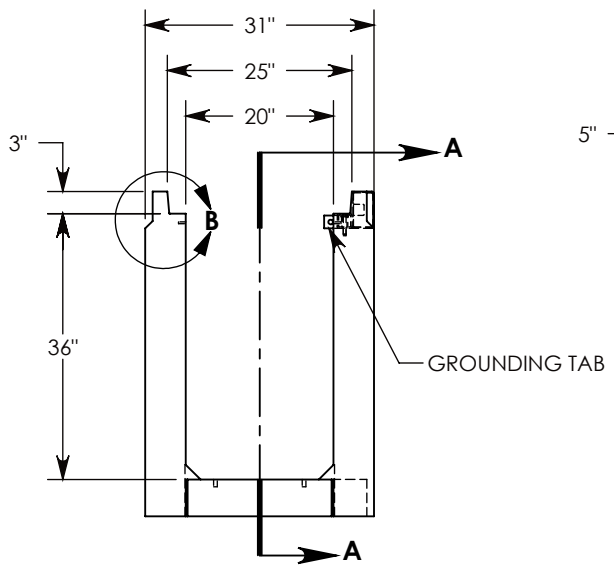
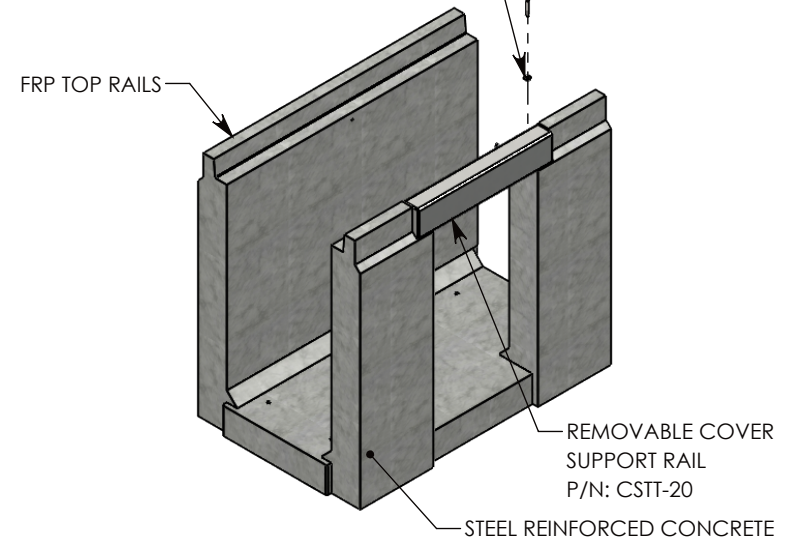


$3/8\text{'-16 UNC X } 2.50\text{' LG HEX HD BOLT, GRADE 8 (2X)}$
 P/N: HHB.38-2.5G8
 $3/8\text{' STD WASHER - } 1\text{' OD (2X)}$
 P/N: WSR.38-1



AASHTO H-20 RATED - 32,000 LB. SINGLE AXLE LOAD

DRAWN BY: SAMUEL CALLAHAN	
CREATED DATE: 8/28/2019	REVISION LEVEL: A
SAVED DATE: 10/14/2020	SAVED BY: scallahan
WEIGHT: 1898 LBS.	MATERIAL: NOTED

1010 NORTH STAR DRIVE
 P.O. BOX 69
 ZUMBROTA, MN 55992-0069

DESCRIPTION:		SHEET 1 OF 1
HEAVY TRAFFIC UNIVERSAL CHANNEL		
DIMENSIONS ARE IN INCHES TOLERANCES: FRACTIONAL: $\pm 1/8\text{'}$ ANGULAR: $\pm 2^\circ$	CONTACT INFORMATION: EMAIL: INFO@CONCASTINC.COM PHONE: (507) 732-4095 FAX: (507) 732-4094	
PART NUMBER:		
HTFU2036 (20X0)		