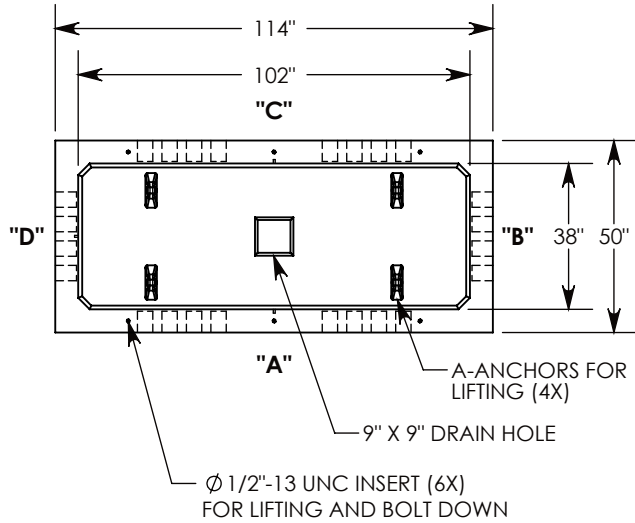


REV. A - SIC - 6/5/2019 - UPDATED ANNOTATIONS, DIMENSIONS, AND VIEWS

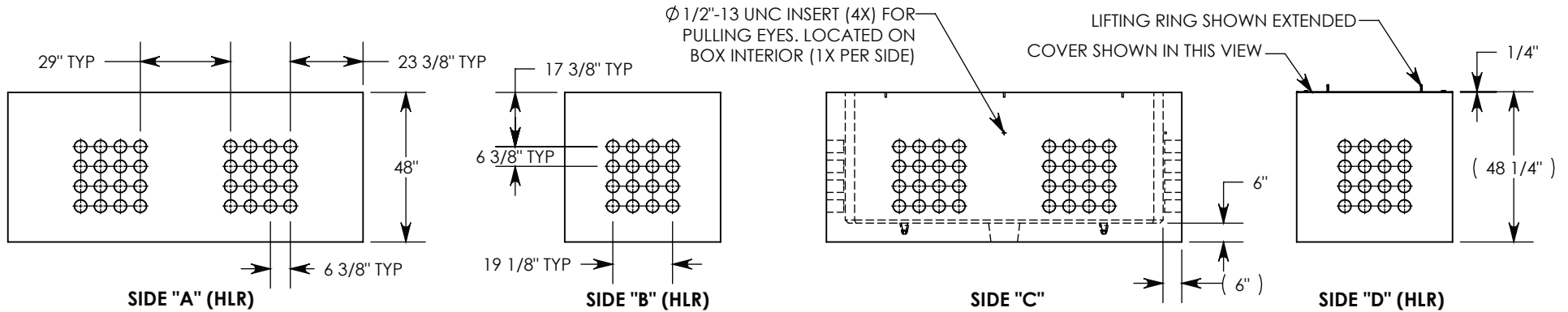
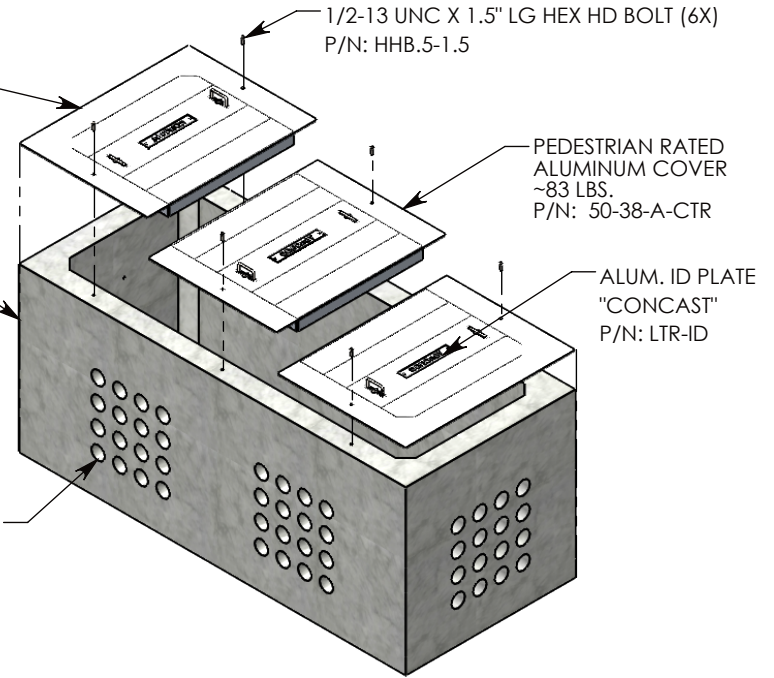
REV. B - SIC - 3/4/2020 - UPDATED ANNOTATIONS; UPDATED 50-38-A COVER WEIGHT, WAS 87 LBS; UPDATED 50-38-A-CTR COVER WEIGHT, WAS 94 LBS



PEDESTRIAN RATED ALUMINUM COVER (2X)  
~77 LBS.  
P/N: 50-38-A

CONCRETE PULL BOX  
~8548 LBS.  
P/N: PB16-50-114-48

CON-DUCT TERMINATIONS ARE CAST INTO BOX SIDEWALLS. SETS OF 16 ON EACH SIDE. THEY FIT UP TO 4" PVC PIPE. TO ACCESS THE HOLES, BREAK THE PLASTIC SEAL



NOTE 1: FOR PVC SIZES SMALLER THAN 4", USE CONCAST RC41 (REDUCING COUPLER).

NOTE 2: FOR ADDED SECURITY, PENTA HEAD BOLTS (P/N: PTA.5-1.5) CAN BE ADDED

PEDESTRIAN RATED - 200 LB. PER SQ. FOOT

<b>DRAWN BY:</b> ROBIN FLINT	
<b>CREATED DATE:</b> 6/24/2011	<b>REVISION LEVEL:</b> B
<b>SAVED DATE:</b> 3/4/2020	<b>SAVED BY:</b> scallahan
<b>WEIGHT:</b> 8786 LBS.	<b>MATERIAL:</b> NOTED

**CONCAST**  
1010 NORTH STAR DRIVE  
P.O. BOX 69  
ZUMBROTA, MN 55992-0069

<b>DESCRIPTION:</b> CONCRETE PULL BOX W/ALUMINUM COVERS		
DIMENSIONS ARE IN INCHES TOLERANCES: FRACTIONAL: ± 1/8" ANGULAR: ± 2°	CONTACT INFORMATION: EMAIL: INFO@CONCASTINC.COM PHONE: (507) 732-4095 FAX: (507) 732-4094	SHEET 1 OF 1
<b>PART NUMBER:</b> PB16-50-114-48-A		