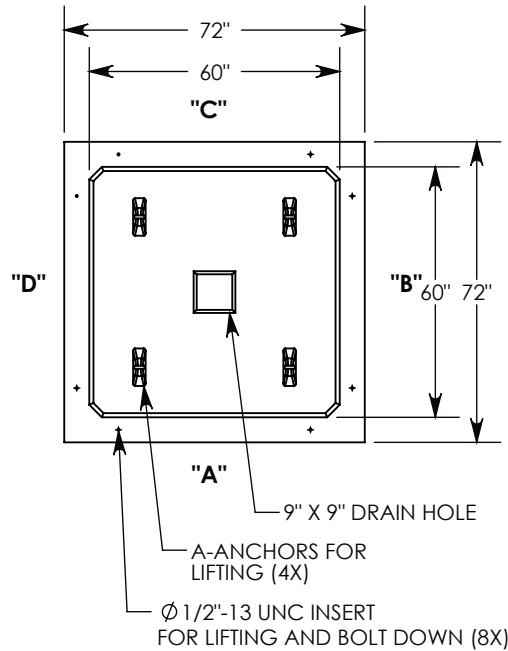


REV. A - SIC - 6/10/2019 - UPDATED ANNOTATIONS, DIMENSIONS, BOX HEIGHT AND VIEWS
 REV. B - JCG - 10/20/2020 - UPDATED COVER



- 1/2"-13 UNC X 1.5" LG HEX HD BOLT (8X)
P/N: HHB.5-1.5
- 1/2" WASHER - 1-3/8" OD (8X)
P/N: WSR.5-1.38
- 3/8"-16 UNC X 2.5" LG HEX HD BOLT (4X)
P/N: HHB.38-2.5

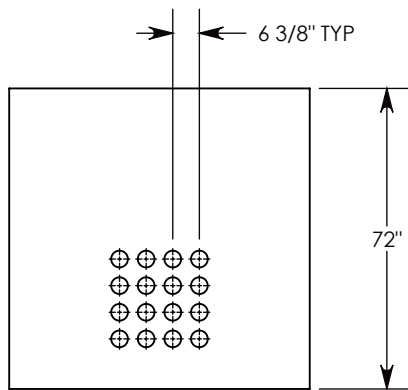
BOLT-DOWN GALV. STEEL FRAME & SPA COVER
 ~958 LBS
 P/N: 72-72-SPA

CONCRETE PULL BOX
 ~10797 LBS
 P/N: PB16-72-72-72

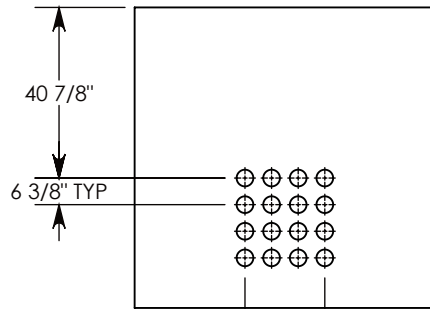
CON-DUCT TERMINATIONS ARE CAST INTO BOX SIDEWALLS. 16 PER SIDE THEY FIT UP TO 4" PVC PIPE. TO ACCESS THE HOLES, BREAK THE PLASTIC SEAL.

Ø 1/2"-13 UNC INSERT (4X) FOR PULLING EYES. LOCATED ON BOX INTERIOR (1X PER SIDE)

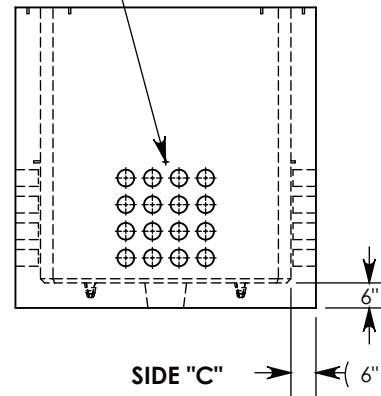
ALUM ID PLATE "CONCAST"
 P/N: LTR-ID



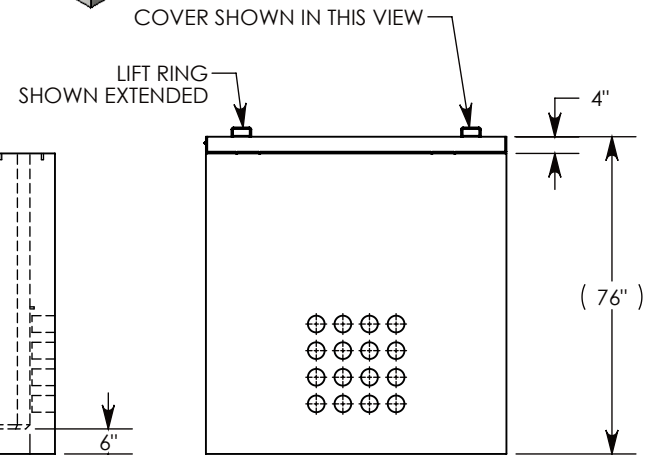
SIDE "A" (HLR)



SIDE "B" (HLR)



SIDE "C"



SIDE "D" HLR

NOTE 1: FOR ADDED SECURITY, PENTA HEAD (P/N: PTA.38-2.5) OR SURELOCK BOLTS (P/N: SL.38-2.5) CAN BE ADDED
 NOTE 2: FOR PVC SIZES SMALLER THAN 4", USE CONCAST RC41 (REDUCING COUPLER)

AASHTO H-20 RATED - 32,000 LB. SINGLE AXLE LOAD

DRAWN BY: JESSE GUTTING	
CREATED DATE: 6/24/2011	REVISION LEVEL: B
SAVED DATE: 10/22/2020	SAVED BY: jgutting
WEIGHT: 11756 LBS.	MATERIAL: NOTED

1010 NORTH STAR DRIVE
 P.O. BOX 69
 ZUMBROTA, MN 55992-0069

DESCRIPTION: CONCRETE PULL BOX W/ SPA COVER	
DIMENSIONS ARE IN INCHES TOLERANCES: FRACTIONAL: ± 1/8" ANGULAR: ± 2°	CONTACT INFORMATION: EMAIL: INFO@CONCASTINC.COM PHONE: (507) 732-4095 FAX: (507) 732-4094
PART NUMBER: PB16-72-72-72-SPA	
SHEET 1 OF 1	