

3/8-16 UNC X 2.5" LG HEX HD BOLT (4X)
P/N: HHB.38-2.5

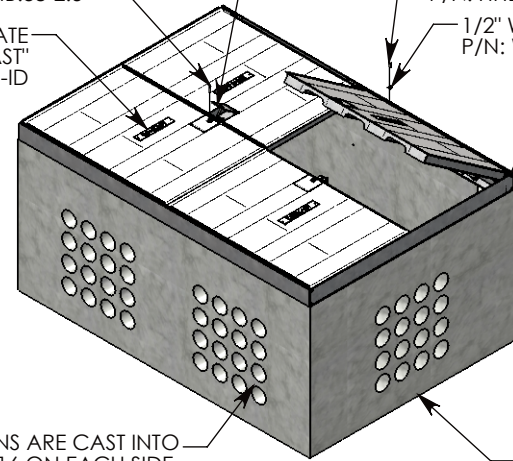
ALUM ID PLATE
"CONCAST"
P/N: LTR-ID

HINGED PADLOCK COVER (4X)
P/N: AC-06

1/2-13 UNC X 1.5" LG HEX HD BOLT (8X)
P/N: HHB.5-1.5

1/2" WASHER - 1-3/8" OD (8X)
P/N: WSR.5-1.38

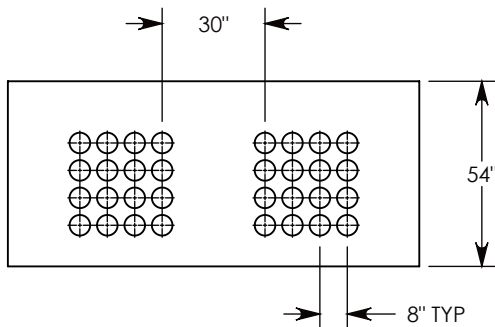
BOLT DOWN STEEL GALV.
FRAME & SPA COVER
~2149 LBS.
P/N: 84-120-SPA



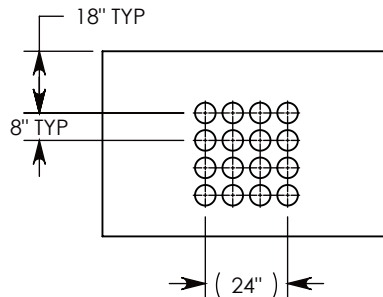
CON-DUCT TERMINATIONS ARE CAST INTO
BOX SIDEWALLS. SETS OF 16 ON EACH SIDE.
THEY FIT UP TO 6" PVC PIPE. TO ACCESS
THE HOLES, BREAK THE PLASTIC SEAL

CONCRETE PULL BOX
~12817 LBS
P/N: PB166-84-120-54

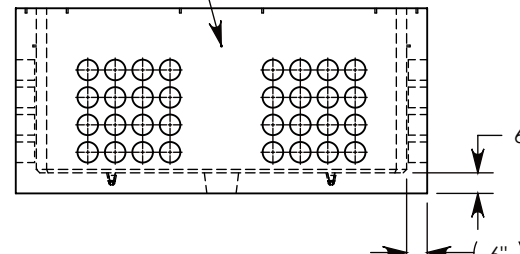
Ø 1/2"-13 UNC INSERT (4X) FOR
PULLING EYES. LOCATED ON
BOX INTERIOR (1X PER SIDE)



SIDE "A" (HLR)

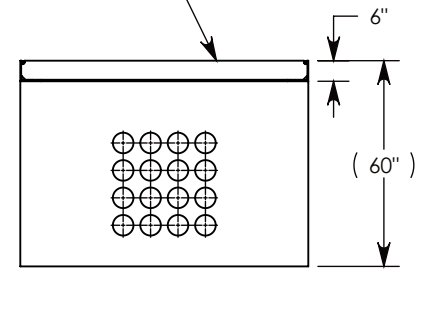


SIDE "B" (HLR)



SIDE "C"

COVER SHOWN IN THIS VIEW



SIDE "D" (HLR)

NOTE 1: FOR ADDED SECURITY, PENTA HEAD (P/N: PTA.38-2.5) OR SURELOCK BOLTS (P/N: SL.38-2.5) CAN BE ADDED

AASHTO H-20 RATED - 32,000 LB. SINGLE AXLE LOAD

DRAWN BY: SAMUEL CALLAHAN		 1010 NORTH STAR DRIVE P.O. BOX 69 ZUMBROTA, MN 55992-0069	DESCRIPTION: CONCRETE PULL BOX W/ SPA COVERS		
DATE: 8/28/2020	REVISION LEVEL: A		DIMENSIONS ARE IN INCHES TOLERANCES: FRACTIONAL: ± 1/8" ANGULAR: ± 2°	CONTACT INFORMATION: EMAIL: INFO@CONCASTINC.COM PHONE: (507) 732-4095 FAX: (507) 732-4094	SHEET 1 OF 1
WEIGHT: 14967 LBS.	MATERIAL: NOTED		PART NUMBER: PB166-84-120-54-SPA		