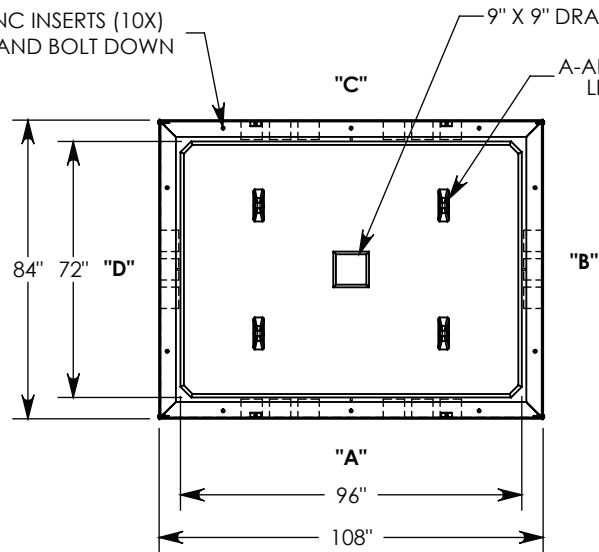


Ø 1/2"-13 UNC INSERTS (10X)
FOR LIFTING AND BOLT DOWN



3/8-16 UNC X 1.5" LG HEX HD BOLT (4X)
P/N: HHB.38-1.5

ALUMINUM ID PLATE (2X)
"CONCAST"
P/N: LTR-ID

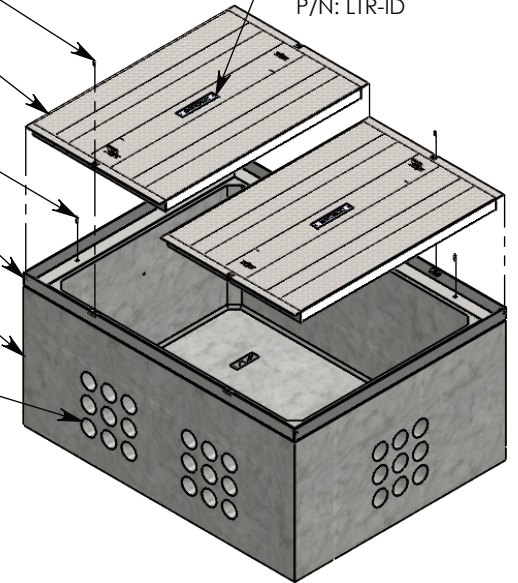
H-20 HEAVY TRAFFIC RATED
GALVANIZED STEEL COVER (2X)
~633 LBS
P/N: 84-54-RSG

1/2-13 UNC X 1.5" LG HEX HD BOLT (10X)
P/N: HHB.5-1.5

BOLT DOWN GALV. STEEL FRAME
~153 LBS
P/N: 84-108-FRM

CONCRETE PULL BOX
~11219 LBS
P/N: PB96-84-108-48

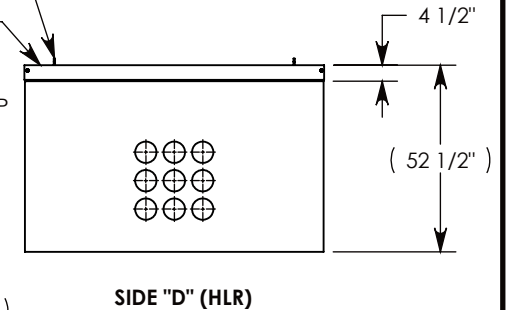
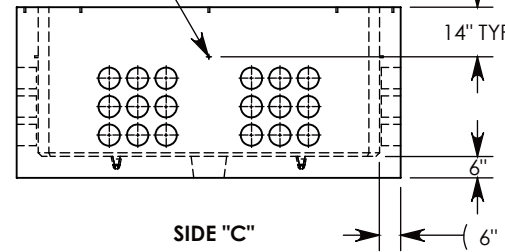
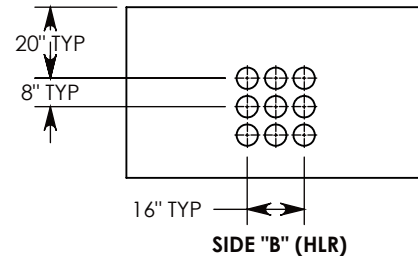
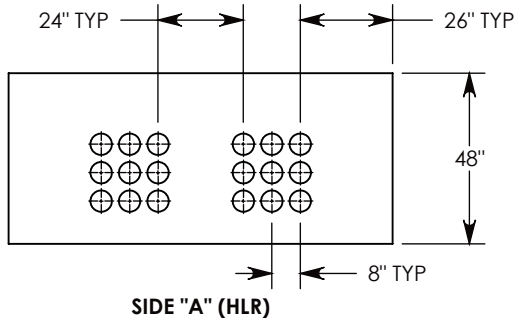
CON-DUCT TERMINATIONS ARE CAST INTO
BOX SIDEWALLS. SETS OF 9 ON EACH SIDE.
THEY FIT UP TO 6" PVC PIPE. TO ACCESS
THE HOLES, BREAK THE PLASTIC SEAL



Ø 1/2"-13 UNC INSERT (4X) FOR
PULLING EYES. LOCATED ON
BOX INTERIOR (1X PER SIDE)

LIFTING RING
SHOWN EXTENDED

COVER SHOWN IN THIS VIEW



NOTE 1: FOR ADDED SECURITY, PENTA HEAD (P/N: PTA.38-1.5) OR SURELOCK BOLTS (P/N: SL.38-1.25) CAN BE ADDED

AASHTO H-20 RATED – 32,000 LB. SINGLE AXLE LOAD

DRAWN BY: **MALACHI MLINAR**

DATE: **6/12/2019**

REVISION LEVEL: **B**

WEIGHT:

12718 LBS.

MATERIAL:

NOTED



DESCRIPTION:

PULL BOX W/ ALUMINUM COVER

DIMENSIONS ARE IN INCHES
TOLERANCES:
FRACTIONAL: ± 1/8"
ANGULAR: ± 2°

CONTACT INFORMATION:
EMAIL: INFO@CONCASTINC.COM
PHONE: (507) 732-4095
FAX: (507) 732-4094

SHEET 1 OF 1

PART NUMBER:

PB96-84-108-48-RSG