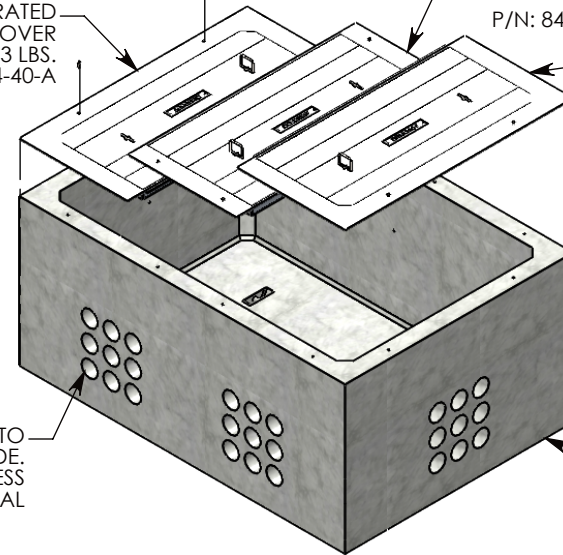


1/2-13 UNC X 1.5" LG HEX HD BOLT (8X)  
P/N: HHB.5-1.5

PEDESTRIAN RATED ALUMINUM COVER  
~143 LBS.  
P/N: 84-40-A

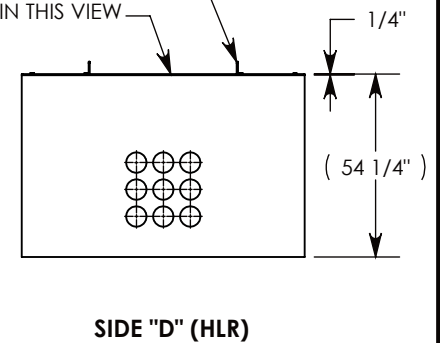
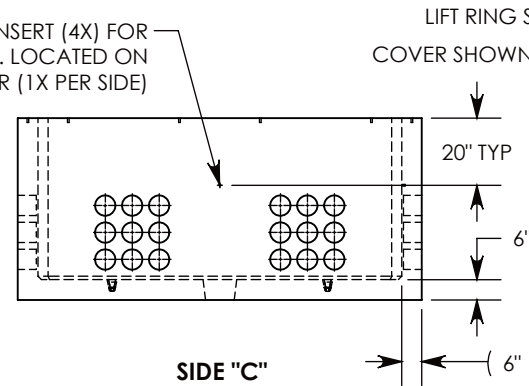
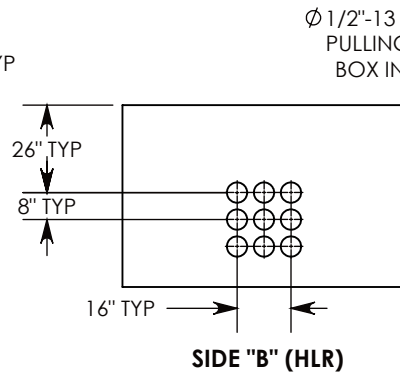
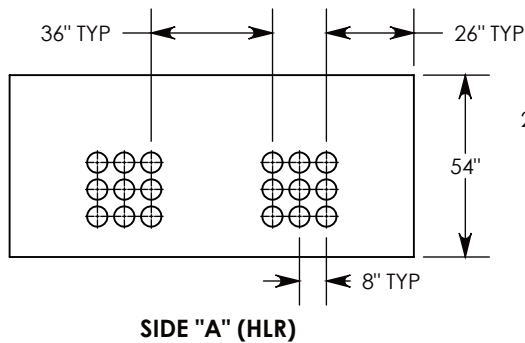
PEDESTRIAN RATED ALUMINUM COVER  
~154 LBS  
P/N: 84-40-A-CTR

PEDESTRIAN RATED ALUMINUM COVER  
~143 LBS.  
P/N: 84-40-A



CON-DUCT TERMINATIONS ARE CAST INTO BOX SIDEWALLS. SETS OF 9 ON EACH SIDE. THEY FIT UP TO 6" PVC PIPE. TO ACCESS THE HOLES, BREAK THE PLASTIC SEAL

CONCRETE PULL BOX  
~13352 LBS.  
P/N: PB96-84-120-54



NOTE 1: FOR ADDED SECURITY, PENTA HEAD (P/N: PTA.5-1.5) BOLTS CAN BE ADDED

PEDESTRIAN RATED - 200 LB. PER SQ. FOOT

DRAWN BY: ROBIN FLINT

DATE: 7/17/2019

REVISION LEVEL: A

WEIGHT:

MATERIAL:

13802 LBS. W/COVER

NOTED



DESCRIPTION:

**PULL BOX W/ALUMINUM COVERS**

DIMENSIONS ARE IN INCHES  
TOLERANCES:  
FRACTIONAL: ± 1/8"  
ANGULAR: ± 2°

CONTACT INFORMATION:  
EMAIL: INFO@CONCASTINC.COM  
PHONE: (507) 732-4095  
FAX: (507) 732-4094

SHEET 1 OF 1

PART NUMBER:

**PB96-84-120-54-A**